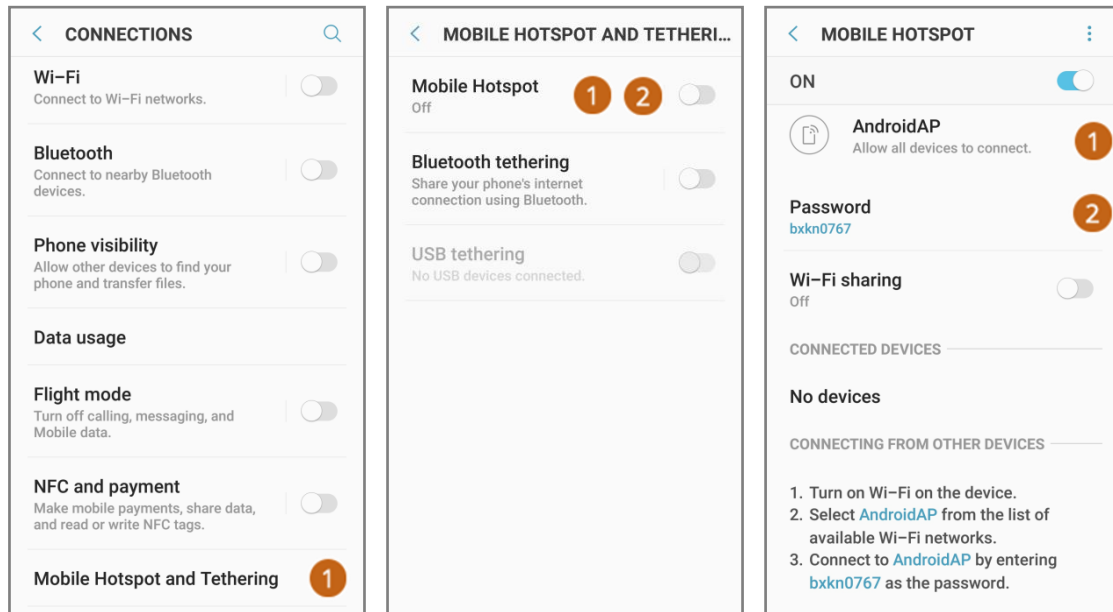


# ExTOPE Connect - How to connect X-MET8000 series to Android mobile

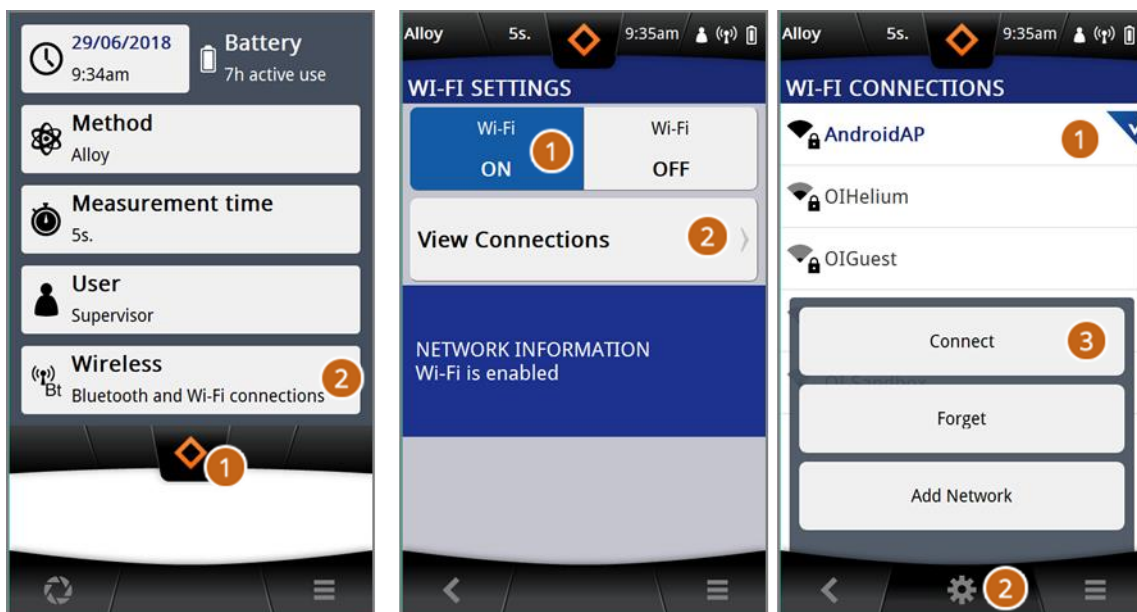
## Android mobile phone

- Select Settings and Connections from the mobile phone.
- Create a Mobile Hotspot in Mobile Hotspot and Tethering option.
  - Switch on the Mobile Hotspot.
  - Click the Mobile Hotspot to see information of the hotspot.



## X-MET8000

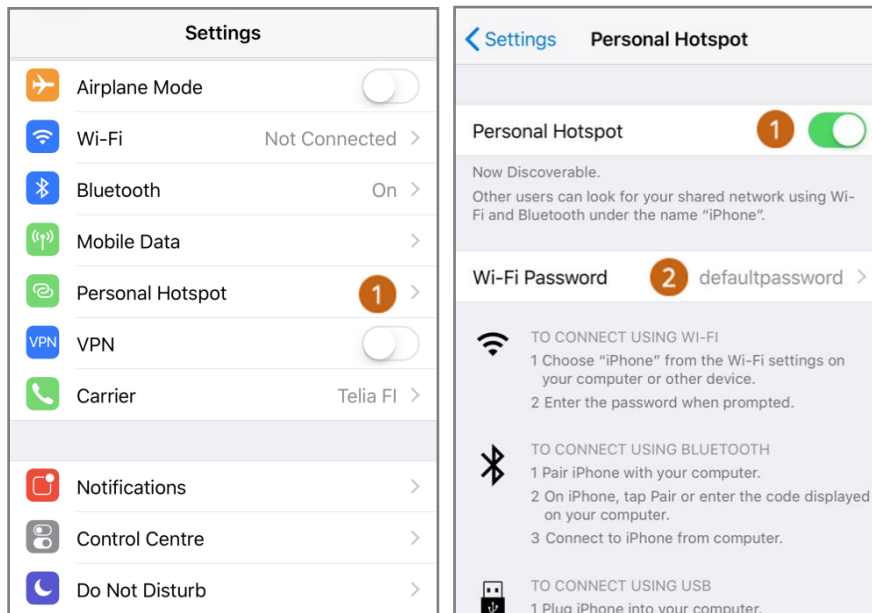
- Swipe down the main menu and select Wireless.
- Switch on the WiFi and select View Connections to see Wi-Fi connections.
- Select the created Mobile Hotspot, go to Tools and select Connect.
- Enter the password which is seen in Mobile Hotspot information, mobile phone.



# ExTOPE Connect - How to connect X-MET8000 series to iOS mobile phone

## iOS mobile phone

- Select Settings from the mobile phone.
- Create a Mobile Hotspot in Personal Hotspot option.
  - Switch on the Personal Hotspot.
  - Click the Wi-Fi Password to see the password of mobile hotspot.



## X-MET8000

- Swipe down the main menu and select Wireless.
- Switch on the Wi-Fi and select View Connections to see Wi-Fi connections.
- Select the Mobile Hotspot created with mobile phone, go to Tools and select Connect.
- Enter the password which is seen in Personal Hotspot information, mobile phone.

